

## Genus *Pedioplanis* Fitzinger, 1843—sand lizards

*Pedioplanis* is a group of typical lacertid lizards endemic to Africa, with most of the 13 species (Uetz 2012) restricted to southern Africa and a few occurring in southern Angola (Branch 1998; Bauer & Branch 2003 [2001]; Conradie *et al.* 2012). Five species (one with two subspecies) are present in the *Atlas* region. Phylogeography of the genus in the subcontinent was recently investigated (Makokha

*et al.* 2007), revealing the existence of a few cryptic taxa that await formal taxonomic description. The majority of species live in very arid habitats. They are diurnal, active foragers capable of astonishing bursts of speed. Females in the *Atlas* region lay clutches of 2–8 eggs (Branch 1998). Most species have extensive distributions and are often locally abundant. None are regarded as threatened.

### *Pedioplanis burchelli* (Duméril & Bibron, 1839)

#### BURCHELL'S SAND LIZARD

Andrew A. Turner

**Global:** Least Concern

**Endemic**

**Taxonomy:** This species may be confused with its morphologically similar sister species *Pedioplanis laticeps* (but see phylogeny in Makokha *et al.* 2007).

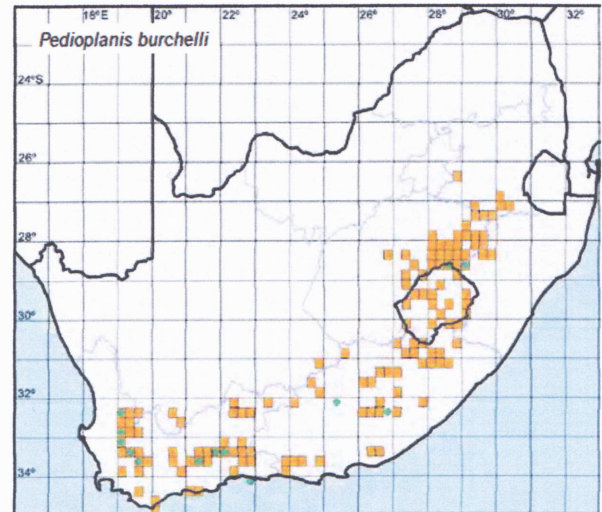
**Distribution:** Endemic to South Africa and Lesotho. Occurs in the eastern part of the *Atlas* region, extending from southern Mpumalanga through the eastern Free State, western KwaZulu-Natal, Lesotho, southern parts of the Northern Cape, and throughout most of the Eastern and Western Cape provinces. The isolated northernmost record (Rietfontein 313IR; 2628BD) in western Mpumalanga was reported by Jacobsen (1989).

**Habitat:** Found in rocky areas, particularly those with exposed bedrock and sparse vegetation (Branch 1998). Often associated with large mountains.

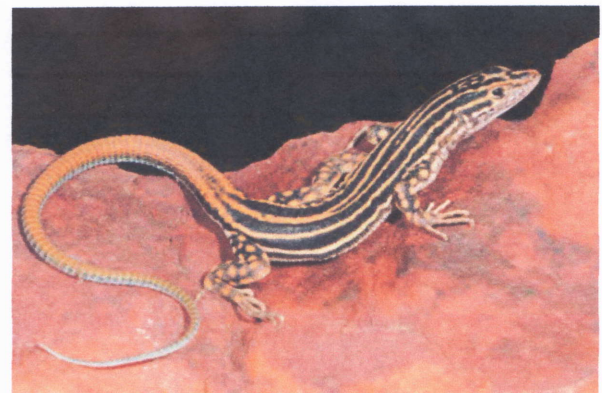
**Biome:** Grassland; Fynbos; Albany Thicket; Nama-Karoo; Succulent Karoo.

**Assessment rationale:** Very widespread and often abundant; no known threats.

**Conservation measures:** None recommended.



*Pedioplanis burchelli*, adult—Fever village, about 25 km SW of Cedarville, EC  
M. Burger



*Pedioplanis burchelli*, subadult—near Farm Hartbeesfontein, Nieu Bethesda area, EC  
W.R. Branch