

Lacerta trilineata BEDRIAGA, 1886
Balkan Green Lizard, Three-lined Emerald Lizard

Identification: A large lizard with a total length around 33-50 cm. Rostral usually in contact with external nares; 2 postnasals; supraciliaries usually in an intermittent row, between 2-15. 42-55 rows of dorsal scales at mid-trunk; ventrals in 8, rarely in 6 longitudinal rows; femoral pores between 12-19. The dorsum of juveniles usually brown, with five lighter colored longitudinal bands, an intermittent band lateral to the ventral scales may also be present. The venter whitish, yellowish, light green or bluish. With onset of maturity, the dorsum changes to green, the bands become indistinct, a fine black stippling

appears, more so in females. In old specimens the dorsum is yellowish-green with a fine black stippling. In adult males, there may be a light blue coloration on head laterals. The venter is yellowish-white in males, pinkish-yellow in females.

Habitat & Biology: Inhabits woods and areas with close vegetation, shaded stony-rocky areas close to rivers and streams, found within cultivated fields and gardens. Usually shelters between the roots and trunks of bushy vegetation. A very agile species which prefers damp environments. Feeds mainly on various insects. A female lays between 7-18 eggs.

Distribution: Its range extends from the Adriatic Sea coast to Balkan countries, Turkey, Caucasia, SW Iran, Syria and Israel; with a vertical distribution to 1500 m. Represented with 9 subspecies in Turkey:

1. *L. t. cariensis* PETERS, 1964: in the vicinities of the Vilayets İzmir, Aydın and Denizli.
2. *L. t. ciliciensis* SCHMIDTLER, 1975: in the vicinities of the Vilayets İçel, Adana and Kahramanmaraş.
3. *L. t. diplochondrodes* WETTSTEIN, 1952: in the vicinities of the Vilayets Muğla and Isparta.
4. *L. t. dobrogica* FUHN-MERTENS, 1959: Turkish Thrace.
5. *L. t. galatiensis* PETERS, 1964: in the vicinities of the Vilayets Ankara, Eskişehir and Kastamonu.
6. *L. t. isaurica* SCHMIDTLER, 1975: in the vicinity of the Vilayet Konya.
7. *L. t. media* LANTZ-CYREN, 1920: E Anatolia, the eastern parts of Central Anatolia.
8. *L. t. pamphylica* SCHMIDTLER, 1975: in the vicinity of Alanya.
9. *L. t. wolterstorffi* MERTENS, 1922: in the vicinity of the Vilayet Hatay.

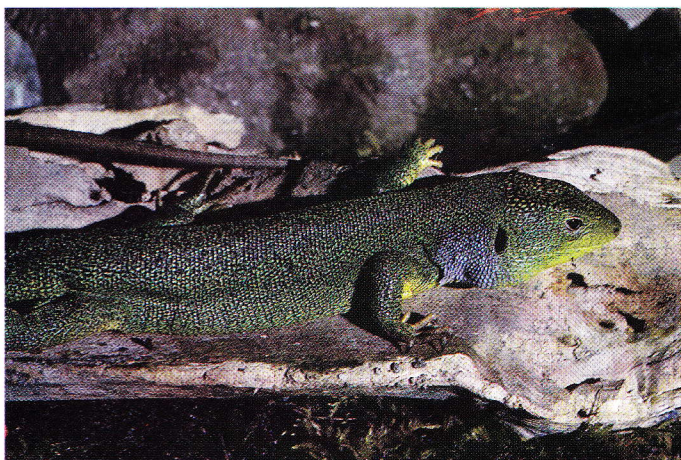
The taxonomical status of this species has been recently revised by SCHMIDTLER (1986); according to this author, *L. media* and *L. pamphylica* are separate species, races of which are being investigated.



66A. *Lacerta trilineata media*



66B. *Lacerta trilineata pamphylica*



66C. *Lacerta trilineata diplochondrodes*



66D. *Lacerta trilineata cariensis*



66E. *Lacerta trilineata isaurica*



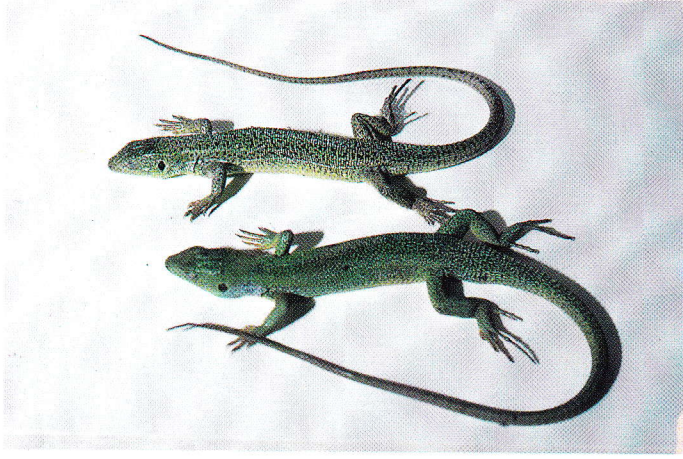
66F. *Lacerta trilineata wolterstorffi*



66G. *Lacerta trilineata galatiensis*



66H. *Lacerta trilineata ciliciensis*



66l. *Lacerta trilineata dobrogica*