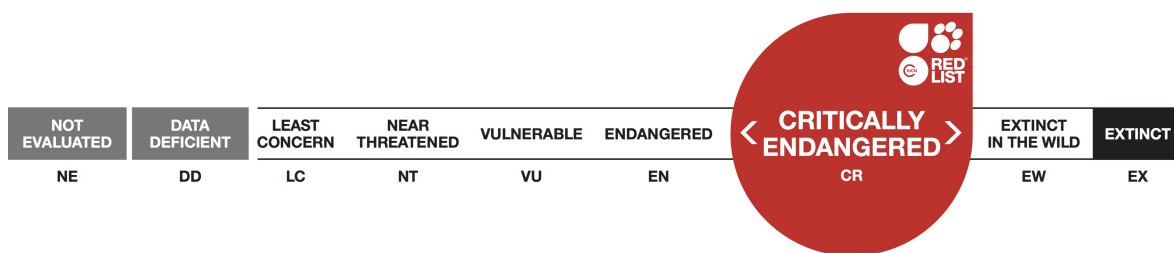


Acanthodactylus beershebensis, Be'er Sheva Fringe-fingered Lizard

Assessment by: Werner, Y., Disi, M. & Mousa Disi, A.M.



View on www.iucnredlist.org

Citation: Werner, Y., Disi, M. & Mousa Disi, A.M. 2006. *Acanthodactylus beershebensis*. *The IUCN Red List of Threatened Species 2006*: e.T61454A12488658.

<http://dx.doi.org/10.2305/IUCN.UK.2006.RLTS.T61454A12488658.en>

Copyright: © 2015 International Union for Conservation of Nature and Natural Resources

Reproduction of this publication for educational or other non-commercial purposes is authorized without prior written permission from the copyright holder provided the source is fully acknowledged.

Reproduction of this publication for resale, reposting or other commercial purposes is prohibited without prior written permission from the copyright holder. For further details see [Terms of Use](#).

The IUCN Red List of Threatened Species™ is produced and managed by the [IUCN Global Species Programme](#), the [IUCN Species Survival Commission \(SSC\)](#) and [The IUCN Red List Partnership](#). The IUCN Red List Partners are: [BirdLife International](#); [Botanic Gardens Conservation International](#); [Conservation International](#); [Microsoft](#); [NatureServe](#); [Royal Botanic Gardens, Kew](#); [Sapienza University of Rome](#); [Texas A&M University](#); [Wildscreen](#); and [Zoological Society of London](#).

If you see any errors or have any questions or suggestions on what is shown in this document, please provide us with [feedback](#) so that we can correct or extend the information provided.

Taxonomy

Kingdom	Phylum	Class	Order	Family
Animalia	Chordata	Reptilia	Squamata	Lacertidae

Taxon Name: *Acanthodactylus beershebensis* Moravec, Baha El Din, Seligmann, Sivan & Werner, 1999

Common Name(s):

- English: Be'er Sheva Fringe-fingered Lizard

Assessment Information

Red List Category & Criteria: Critically Endangered A2c; B2ab(iii) [ver 3.1](#)

Year Published: 2006

Date Assessed: January 31, 2006

Justification:

Listed as Critically Endangered because of a serious population decline, estimated to be more than 80% over the last three generations, inferred from habitat destruction and degradation; and because its area of occupancy is less than 10 km², its distribution is severely fragmented, and there is continuing decline in the extent and quality of its habitat.

Geographic Range

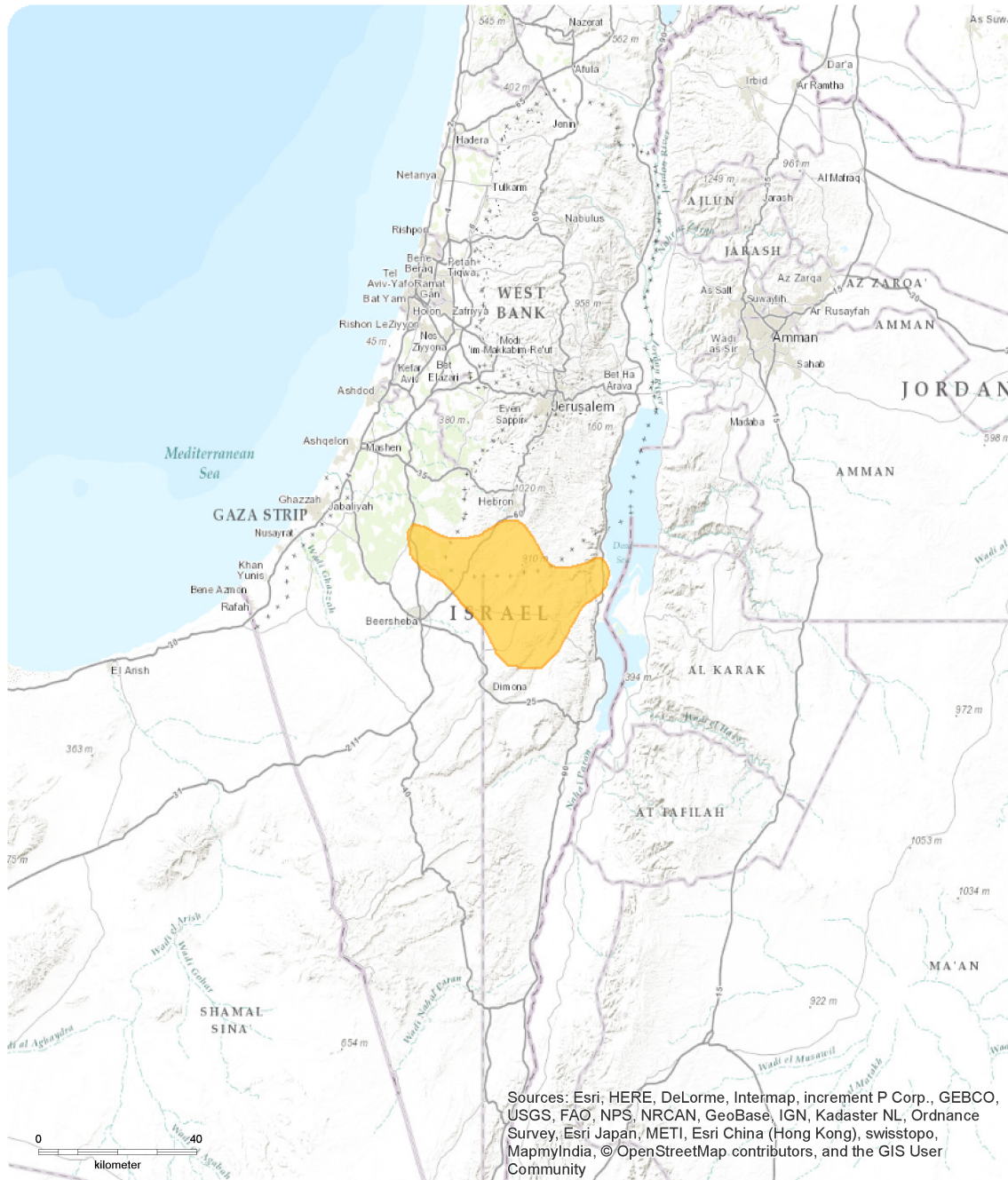
Range Description:

This species is endemic to the Irano-Turanian region of south-central Israel. The map shows the extent of the historic distribution, within which very few fragmented populations remain.

Country Occurrence:

Native: Israel; Palestinian Territory, Occupied

Distribution Map



Acanthodactylus beershebensis

NE	DD	LC	NT	VU	EN	CR	EW	EX
----	----	----	----	----	----	-----------	----	----

CR
CRITICALLY ENDANGERED

Range
 Extant (resident)

Compiled by:
 IUCN (International Union for Conservation of Nature)



The boundaries and names shown and the designations used on this map do not imply any official endorsement, acceptance or opinion by IUCN.



Population

It used to be common species, but is now very rare because of habitat loss.

Current Population Trend: Decreasing

Habitat and Ecology (see Appendix for additional information)

The species inhabits loess plains with sparse shrub cover. The females may have between three and seven eggs. It is not found in agricultural areas. Animals hide under stones and in holes in the ground, and the species digs burrows under the 'green crust' substrate.

Systems: Terrestrial

Threats (see Appendix for additional information)

Much of the habitat of this species (especially the 'green crust') has been destroyed by intensive agriculture, urbanisation, and trampling by grazing animals. It is relatively easily caught by birds, such as falcons, egrets and shrikes, and the abundance of these predatory birds in the area is increasing with ongoing tree planting.

Conservation Actions (see Appendix for additional information)

A small portion of the former range of this species is within protected areas. It is protected by national legislation in Israel.

Credits

Assessor(s): Werner, Y., Disi, M. & Mousa Disi, A.M.

Reviewer(s): Stuart, S.N. & Cox, N. (Global Reptile Assessment)

Bibliography

Dolev, A. and Perevolotsky, A. 2002. *Red Book of Threatened Species in Israel – Vertebrates*. Nature and Parks Authority and the Society for the Protection of Nature in Israel, Jerusalem.

IUCN. 2006. *2006 IUCN Red List of Threatened Species*. www.iucnredlist.org. Downloaded on 04 May 2006.

Citation

Werner, Y., Disi, M. & Mousa Disi, A.M. 2006. *Acanthodactylus beershebensis*. *The IUCN Red List of Threatened Species 2006*: e.T61454A12488658.

<http://dx.doi.org/10.2305/IUCN.UK.2006.RLTS.T61454A12488658.en>

Disclaimer

To make use of this information, please check the [Terms of Use](#).

External Resources

For [Images and External Links to Additional Information](#), please see the Red List website.

Appendix

Habitats

(<http://www.iucnredlist.org/technical-documents/classification-schemes>)

Habitat	Season	Suitability	Major Importance?
3. Shrubland -> 3.5. Shrubland - Subtropical/Tropical Dry	-	Suitable	-

Threats

(<http://www.iucnredlist.org/technical-documents/classification-schemes>)

Threat	Timing	Scope	Severity	Impact Score
1. Residential & commercial development -> 1.1. Housing & urban areas	Ongoing	-	-	-
	Stresses:	1. Ecosystem stresses -> 1.1. Ecosystem conversion 1. Ecosystem stresses -> 1.2. Ecosystem degradation		
2. Agriculture & aquaculture -> 2.1. Annual & perennial non-timber crops -> 2.1.3. Agro-industry farming	Ongoing	-	-	-
	Stresses:	1. Ecosystem stresses -> 1.1. Ecosystem conversion 1. Ecosystem stresses -> 1.2. Ecosystem degradation		
8. Invasive & other problematic species & genes -> 8.2. Problematic native species	Ongoing	-	-	-
	Stresses:	2. Species Stresses -> 2.1. Species mortality		

Conservation Actions in Place

(<http://www.iucnredlist.org/technical-documents/classification-schemes>)

Conservation Actions in Place
In-Place Land/Water Protection and Management
Occur in at least one PA: Yes

Conservation Actions Needed

(<http://www.iucnredlist.org/technical-documents/classification-schemes>)

Conservation Actions Needed
1. Land/water protection -> 1.1. Site/area protection
2. Land/water management -> 2.1. Site/area management

Research Needed

(<http://www.iucnredlist.org/technical-documents/classification-schemes>)

Research Needed
1. Research -> 1.2. Population size, distribution & trends
1. Research -> 1.3. Life history & ecology
1. Research -> 1.5. Threats
1. Research -> 1.6. Actions
3. Monitoring -> 3.1. Population trends

The IUCN Red List Partnership



The IUCN Red List of Threatened Species™ is produced and managed by the [IUCN Global Species Programme](#), the [IUCN Species Survival Commission \(SSC\)](#) and [The IUCN Red List Partnership](#). The IUCN Red List Partners are: [BirdLife International](#); [Botanic Gardens Conservation International](#); [Conservation International](#); [Microsoft](#); [NatureServe](#); [Royal Botanic Gardens, Kew](#); [Sapienza University of Rome](#); [Texas A&M University](#); [Wildscreen](#); and [Zoological Society of London](#).