

Dinarolacerta mosorensis, Mosor Rock Lizard

Assessment by: Jelka Crnobrnja Isailovic, Rastko Ajtic, Milan Vogrin



View on www.iucnredlist.org

Citation: Jelka Crnobrnja Isailovic, Rastko Ajtic, Milan Vogrin. 2009. *Dinarolacerta mosorensis*. The IUCN Red List of Threatened Species 2009: e.T61526A12504486.

<http://dx.doi.org/10.2305/IUCN.UK.2009.RLTS.T61526A12504486.en>

Copyright: © 2015 International Union for Conservation of Nature and Natural Resources

Reproduction of this publication for educational or other non-commercial purposes is authorized without prior written permission from the copyright holder provided the source is fully acknowledged.

Reproduction of this publication for resale, reposting or other commercial purposes is prohibited without prior written permission from the copyright holder. For further details see [Terms of Use](#).

The IUCN Red List of Threatened Species™ is produced and managed by the [IUCN Global Species Programme](#), the [IUCN Species Survival Commission \(SSC\)](#) and [The IUCN Red List Partnership](#). The IUCN Red List Partners are: [BirdLife International](#); [Botanic Gardens Conservation International](#); [Conservation International](#); [Microsoft](#); [NatureServe](#); [Royal Botanic Gardens, Kew](#); [Sapienza University of Rome](#); [Texas A&M University](#); [Wildscreen](#); and [Zoological Society of London](#).

If you see any errors or have any questions or suggestions on what is shown in this document, please provide us with [feedback](#) so that we can correct or extend the information provided.

Taxonomy

Kingdom	Phylum	Class	Order	Family
Animalia	Chordata	Reptilia	Squamata	Lacertidae

Taxon Name: *Dinarolacerta mosorensis* (Kolombatović, 1886)

Synonym(s):

- *Lacerta mosorensis*

Common Name(s):

- English: Mosor Rock Lizard

Taxonomic Notes:

The isolated eastern subpopulation in Montenegro has been proposed as a separate species (Ljubisavljevic *et al.* 2007).

Assessment Information

Red List Category & Criteria: Vulnerable B2ab(iii) [ver 3.1](#)

Year Published: 2009

Date Assessed: December 14, 2008

Justification:

Listed as Vulnerable because its area of occupancy is less than 2,000 km², its distribution is severely fragmented, and the extent and quality of its habitat are declining.

Previously Published Red List Assessments

2006 – Vulnerable (VU)

Geographic Range

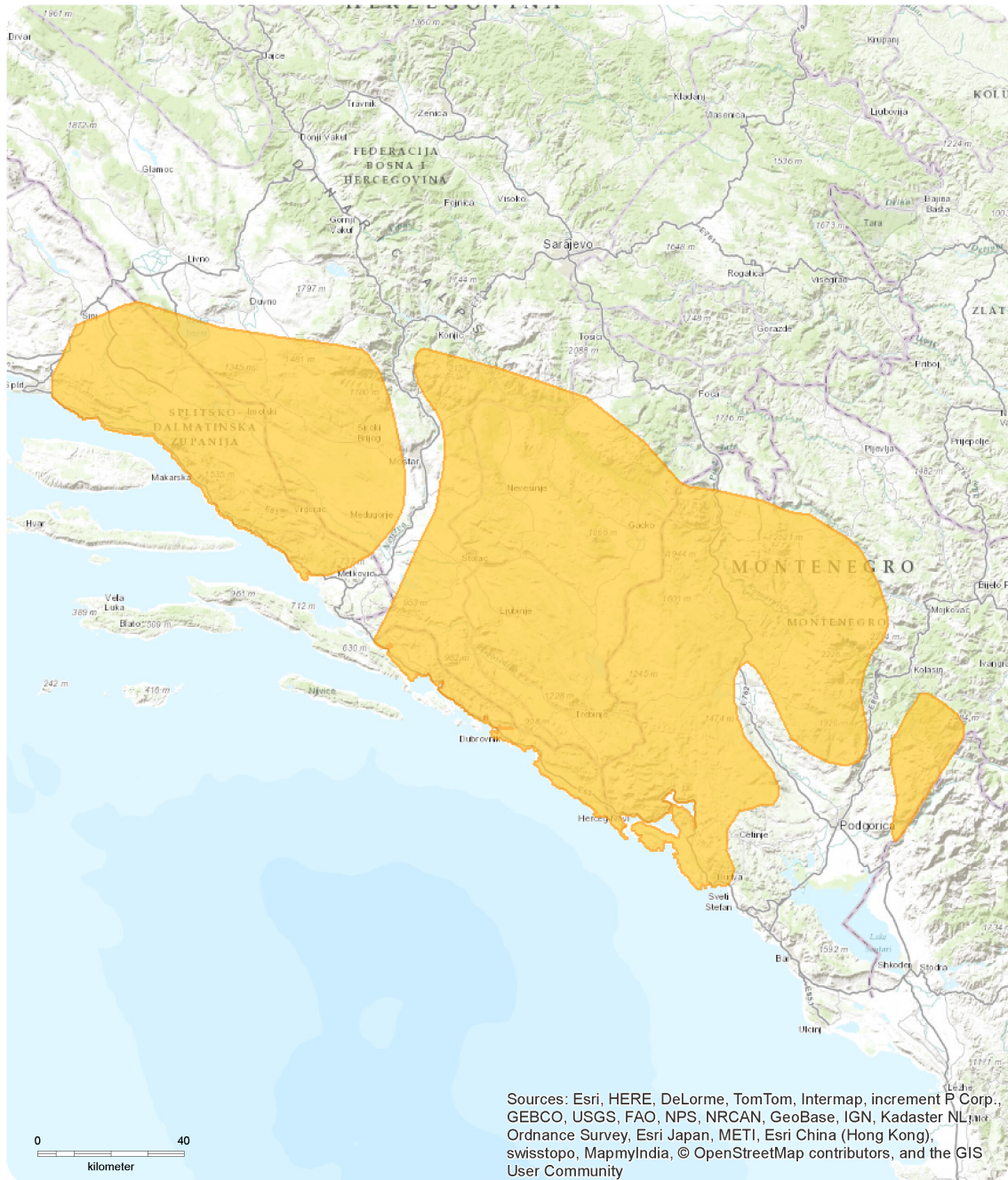
Range Description:

This species is found in the southwestern Dinaric mountain range of southern coastal Croatia, southern Bosnia-Herzegovina and Montenegro. It may be present in northern Albania but further surveys are needed to confirm this. It occurs from 450 to 1,900 m asl.

Country Occurrence:

Native: Bosnia and Herzegovina; Croatia; Montenegro

Distribution Map

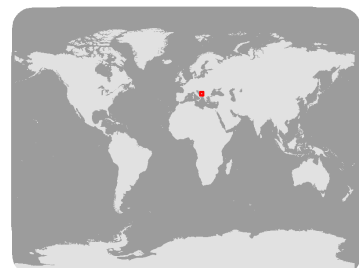


Dinarolacerta mosorensis

Range
■ Extant (resident)

Compiled by:
 IUCN (International Union for Conservation of Nature)

NE DD LC NT < VU > EN CR EW EX
VULNERABLE



The boundaries and names shown and the designations used on this map do not imply any official endorsement, acceptance or opinion by IUCN.



Population

It is not a common species and has a patchy distribution.

Current Population Trend: Decreasing

Habitat and Ecology (see Appendix for additional information)

It is largely found in humid, rocky, montane areas of exposed karst. The species inhabits open woodland and sites with a rich vegetation cover. The females lay a single clutch of four to eight eggs.

Systems: Terrestrial

Threats (see Appendix for additional information)

It is threatened by the loss of suitable habitat due to logging, including within protected areas. Collection of animals for the pet-trade was a threat in the past. It is likely that some small-scale illegal trade continues.

Conservation Actions (see Appendix for additional information)

It is listed on Annex III of the Bern Convention and is protected by national legislation in some range countries. It is present in a number of protected areas.

Credits

Assessor(s): Jelka Crnobrnja Isailovic, Rastko Ajtic, Milan Vogrin

Reviewer(s): Cox, N. & Temple, H.J. (Global Reptile Assessment)

Bibliography

Arnold, E.N. 2003. *Reptiles and amphibians of Europe*. Princeton University Press., Princeton and Oxford.

Arribas, O.J. 1999. Phylogeny and relationships of the mountain lizards of Europe and Near East (Archaeolacerta Mertens, 1921, sensu lato) and their relationships among the eurasian lacertid radiation. *Russ. J. Herpetol.*: 1-22.

Bischoff, W. 1984. Lacerta mosorensis - Mosor-Eidechse. In: Böhme, W. (ed.), *Handbuch der Reptilien und Amphibien Europas, Band 2/I., Echsen II (Lacerta)*., pp. 290-300. Aula-Verlag, Wiesbaden.

Carranza, S., Arnold, E.N. and Amat, F. 2004. DNA phylogeny of Lacerta (Iberolacerta) and other lacertine lizards (Reptilia: Lacertidae): did competition cause long-term mountain restriction? *Systematics and Biodiversity*: 57-77.

Crochet, P.-A. and Dubois, A. 2004. Recent changes in the taxonomy of European amphibians and reptiles. In: Gasc, J.-P., Cabela, A., Crnobrnja-Isailovic, J., Dolmen, D., Grossenbacher, K., Haffner, P., Lescure, J., Martens, H., Martínez Rica, J.P., Maurin, H., Oliveira, M.E., Sofianidou, T.S., Veith, M., Zuiderwijk, A. (ed.), *Atlas of Amphibians and Reptiles in Europe. Re-edition.*, Muséum national d'Histoire naturelle, Paris.

Dzukic, G., Djorovic, A., Kalezic, M.L., Aleksic, I. and Crnobrnja-Isailovic, J. 1997. The Mosor Lizard occurs also in the Prokletije Mountain Massif. *Univ. Thought. Nat. Sci.* 3(2): 61-62.

Gasc, J.-P., Cabela, A., Crnobrnja-Isailovic, J., Dolmen, D., Grossenbacher, K., Haffner, P., Lescure, J., Martens, H., Martínez-Rica, J.P., Maurin, H., Oliveira, M.E., Sofianidou, T.S., Veith, M. and Zuiderwijk, A. 1997. *Atlas of Amphibians and Reptiles in Europe*. Societas Europaea Herpetologica and Musée National d'Histoire Naturelle, Paris.

IUCN. 2009. European Species on the IUCN Red List. Available at: <http://www.iucnredlist.org/europe>. (Accessed: 22 June 2009).

Ljubisavljević, K., Arribas, O., Džukić, G. and Carranza, S. 2007. Genetic and morphological differentiation of Mosor rock lizards, *Dinarolacerta mosorensis* (Kolombatović, 1886), with the description of a new species from the Prokletije Mountain Massif (Montenegro) (Squamata: Lacertidae). *Zootaxa* 1613: 1-22.

Ljubisavljević, K., Polović, L., Tomašević Kolarov, N., Džukić, G. and Kalezić, M.L. 2007. Female life-history characteristics of the Mosor rock lizard, *Dinarolacerta mosorensis* (Kolombatović, 1886) from Montenegro (Squamata: Lacertidae). *Journal of Natural History* 41(45-48): 2979-2993.

Mayer, W. and Arribas, O.J. 2003. Phylogenetic relationships of the European lacertid genera Archaeolacerta and Iberolacerta and their relationships to some other 'Archaeolacertae' (sensu lato) from Near East, derived from mitochondrial DNA sequences. *Journal of zoological Systematics and evolutionary Research*: 157-161.

Sindaco, R. and Jeremčenko, V.K. 2008. *The Reptiles of the Western Palearctic. 1. Annotated Checklist and Distributional atlas of the turtles, crocodiles, amphisbaenians and lizards of Europe, North Africa, Middle East and Central Asia*. Edizioni Belvedere, Latina (Italy).

Citation

Jelka Crnobrnja Isailovic, Rastko Ajtic, Milan Vogrin. 2009. *Dinarolacerta mosorensis*. *The IUCN Red List of Threatened Species 2009*: e.T61526A12504486.

<http://dx.doi.org/10.2305/IUCN.UK.2009.RLTS.T61526A12504486.en>

Disclaimer

To make use of this information, please check the [Terms of Use](#).

External Resources

For [Images and External Links to Additional Information](#), please see the Red List website.

Appendix

Habitats

(<http://www.iucnredlist.org/technical-documents/classification-schemes>)

Habitat	Season	Suitability	Major Importance?
1. Forest -> 1.1. Forest - Boreal	-	Suitable	-
1. Forest -> 1.4. Forest - Temperate	-	Suitable	-
3. Shrubland -> 3.4. Shrubland - Temperate	-	Suitable	-
0. Root -> 6. Rocky areas (eg. inland cliffs, mountain peaks)	-	Suitable	-

Use and Trade

(<http://www.iucnredlist.org/technical-documents/classification-schemes>)

End Use	Local	National	International
Pets/display animals, horticulture	No	Yes	Yes

Threats

(<http://www.iucnredlist.org/technical-documents/classification-schemes>)

Threat	Timing	Scope	Severity	Impact Score
5. Biological resource use -> 5.1. Hunting & trapping terrestrial animals -> 5.1.1. Intentional use (species is the target)	Past, unlikely to return	-	-	-
	Stresses:	2. Species Stresses -> 2.1. Species mortality		
5. Biological resource use -> 5.3. Logging & wood harvesting -> 5.3.5. Motivation Unknown/Unrecorded	Ongoing	-	-	-
	Stresses:	1. Ecosystem stresses -> 1.2. Ecosystem degradation		

Conservation Actions in Place

(<http://www.iucnredlist.org/technical-documents/classification-schemes>)

Conservation Actions in Place
In-Place Land/Water Protection and Management
Conservation sites identified: Yes, over entire range

Conservation Actions Needed

(<http://www.iucnredlist.org/technical-documents/classification-schemes>)

Conservation Actions Needed
2. Land/water management -> 2.1. Site/area management
5. Law & policy -> 5.1. Legislation -> 5.1.2. National level
5. Law & policy -> 5.4. Compliance and enforcement -> 5.4.1. International level

Research Needed

(<http://www.iucnredlist.org/technical-documents/classification-schemes>)

Research Needed
1. Research -> 1.2. Population size, distribution & trends
1. Research -> 1.3. Life history & ecology
1. Research -> 1.5. Threats
1. Research -> 1.6. Actions
3. Monitoring -> 3.1. Population trends

Additional Data Fields

Distribution
Lower elevation limit (m): 450
Upper elevation limit (m): 1900
Population
Population severely fragmented: No

The IUCN Red List Partnership



The IUCN Red List of Threatened Species™ is produced and managed by the [IUCN Global Species Programme](#), the [IUCN Species Survival Commission \(SSC\)](#) and [The IUCN Red List Partnership](#). The IUCN Red List Partners are: [BirdLife International](#); [Botanic Gardens Conservation International](#); [Conservation International](#); [Microsoft](#); [NatureServe](#); [Royal Botanic Gardens, Kew](#); [Sapienza University of Rome](#); [Texas A&M University](#); [Wildscreen](#); and [Zoological Society of London](#).