

Iberolacerta monticola, Iberian Rock Lizard

Assessment by: Valentin Pérez-Mellado, Paulo Sá-Sousa, Rafael Marquez, Iñigo Martínez-Solano



View on www.iucnredlist.org

Citation: Valentin Pérez-Mellado, Paulo Sá-Sousa, Rafael Marquez, Iñigo Martínez-Solano. 2009. *Iberolacerta monticola*. The IUCN Red List of Threatened Species 2009: e.T61448A12487278. <http://dx.doi.org/10.2305/IUCN.UK.2009.RLTS.T61448A12487278.en>

Copyright: © 2015 International Union for Conservation of Nature and Natural Resources

Reproduction of this publication for educational or other non-commercial purposes is authorized without prior written permission from the copyright holder provided the source is fully acknowledged.

Reproduction of this publication for resale, reposting or other commercial purposes is prohibited without prior written permission from the copyright holder. For further details see [Terms of Use](#).

The IUCN Red List of Threatened Species™ is produced and managed by the [IUCN Global Species Programme](#), the [IUCN Species Survival Commission \(SSC\)](#) and [The IUCN Red List Partnership](#). The IUCN Red List Partners are: [BirdLife International](#); [Botanic Gardens Conservation International](#); [Conservation International](#); [Microsoft](#); [NatureServe](#); [Royal Botanic Gardens, Kew](#); [Sapienza University of Rome](#); [Texas A&M University](#); [Wildscreen](#); and [Zoological Society of London](#).

If you see any errors or have any questions or suggestions on what is shown in this document, please provide us with [feedback](#) so that we can correct or extend the information provided.

Taxonomy

Kingdom	Phylum	Class	Order	Family
Animalia	Chordata	Reptilia	Squamata	Lacertidae

Taxon Name: *Iberolacerta monticola* (Boulenger, 1905)

Synonym(s):

- *Archaeolocerta monticola*
- *Lacerta monticola*

Common Name(s):

- English: Iberian Rock Lizard
- Spanish: Lagartija Serrana, Lagartija Serrana

Taxonomic Notes:

Iberolacerta cyreni and *Iberolacerta martinezricai* are now separated as distinct species from *Iberolacerta monticola* (Mayer and Arribas 1996) and mitochondrial DNA (Mayer and Arribas 2003; Carranza *et al.* 2004a; Crochet *et al.* 2004). This species was formerly included in the genus *Lacerta*, but is now included in *Iberolacerta*, following Carranza *et al.* (2004), and based on evidence from Arribas (1998, 1999), Carranza *et al.* (2004), Harris *et al.* (1998) and Mayer and Arribas (2003). The population in the Montes de León has recently been described as a separate species, *Iberolacerta galani* (Arribas *et al.* 2006).

Assessment Information

Red List Category & Criteria: Vulnerable B1ab(iii) [ver 3.1](#)

Year Published: 2009

Date Assessed: December 14, 2008

Justification:

Listed as Vulnerable because its Extent of Occurrence is less than 20,000 km², its distribution is severely fragmented, and there is continuing decline in the extent and quality of its habitat.

Previously Published Red List Assessments

2006 – Vulnerable (VU)

1996 – Lower Risk/least concern (LR/lc)

1996 – Lower Risk/least concern (LR/lc)

1994 – Insufficiently Known (K)

Geographic Range

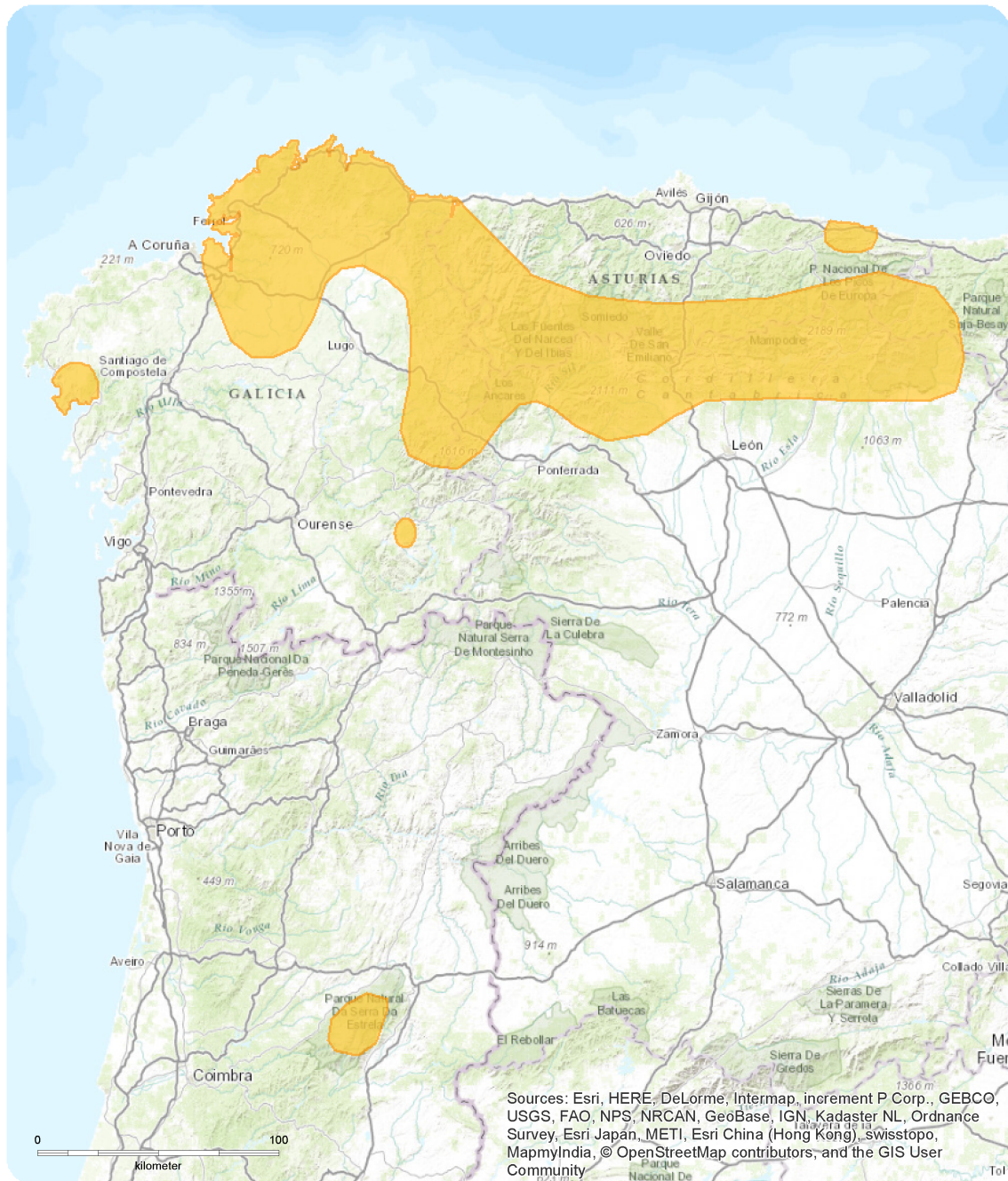
Range Description:

This species is present in the Cantabrian Mountains and in Galicia in northwestern Spain, and in the Serra da Estrela in central Portugal. Its populations are severely fragmented. It ranges from sea-level in Galicia to 2,000m asl.

Country Occurrence:

Native: Portugal; Spain

Distribution Map



Iberolacerta monticola

Range
■ Extant (resident)

Compiled by:
 IUCN (International Union for Conservation of Nature)

NE	DD	LC	NT	< VU >	EN	CR	EW	EX
----	----	----	----	--	----	----	----	----

VULNERABLE



The boundaries and names shown and the designations used on this map do not imply any official endorsement, acceptance or opinion by IUCN.



Population

It can occur at high densities where the habitat is suitable, but it is very localized. Some populations are in decline.

Current Population Trend: Decreasing

Habitat and Ecology (see Appendix for additional information)

In most places, this is a mountainous species often found close to the tree-line in damp habitats, where it can be found in areas of scrub and boulders. In Galicia it also occurs in lowland forest close to the sea, sometimes close to streams. The females lay three to ten eggs in a clutch and may have one to three clutches annually.

Systems: Terrestrial

Threats (see Appendix for additional information)

The populations of this species are highly fragmented and threatened by habitat loss due to agriculture, silviculture and tourism. Populations in Galicia have been declining through the habitat loss to fire, and the loss of suitable rocky areas.

Conservation Actions (see Appendix for additional information)

This species is listed on Annex II of the Bern Convention, and it occurs in a number of protected areas in the Cantabrian Mountains. It occurs in the Serra da Estrela Natural Park in Portugal. The development of an action plan has begun in Portugal.

Credits

Assessor(s): Valentin Pérez-Mellado, Paulo Sá-Sousa, Rafael Marquez, Iñigo Martínez-Solano

Reviewer(s): Cox, N. and Temple, H.J. (Global Reptile Assessment)

Bibliography

- Andreu, A., Bea, A., Braña, F., Galán, P., López-Jurado, L.F., Pérez-Mellado, V., Pleguezuelos, J.M. and Salvador, A. 1998. Fauna Ibérica. Reptiles. 10: 1-705.
- Arnold, E.N. 2003. *Reptiles and amphibians of Europe*. Princeton University Press., Princeton and Oxford.
- Arnold, E.N., Arribas, O. and Carranza, S. 2007. *Systematics of the Palaearctic and Oriental lizards tribe Lacertini (Squamata: Lacertidae: Lacertinae), with descriptions of eight new genera*. *Zootaxa*, 1430: 1-86..
- Arribas, O., Carranza, S. and Odierna, G. 2006. Description of a new endemic species of mountain lizard from Northwestern Spain: *Iberolacerta galani* sp. nov. (Squamata: Lacertidae). *Zootaxa* 2240: 1-55.
- Arribas, O.J. 1996. Taxonomic revision of the Iberian 'Archaeolacertae' I: A new interpretation of the geographical variation of 'Lacerta' monticola Boulenger 1905 and 'Lacerta' cyreni Müller & Hellmich 1937 (Squamata: Sauria: Lacertidae). *Herpetozoa*: 31-56.
- Arribas, O.J. 1998. Osteology of the Pyrenean mountain lizards and comparison with other species of the collective genus *Archaeolacerta* Mertens, 1921 s.l. from Europe and Asia Minor. *Herpetozoa*: 155-180.
- Arribas, O.J. 1999. New data on the Peña de Francia Mountain Lizard 'Lacerta' cyreni martinezrici Arribas, 1996 (Squamata: Lacertidae). *Herpetozoa*: 119-128.
- Arribas, O.J. 1999. Phylogeny and relationships of the mountain lizards of Europe and Near East (*Archaeolacerta* Mertens, 1921, sensu lato) and their relationships among the eurasian lacertid radiation. *Russ. J. Herpetol.*: 1-22.
- Arribas, O.J. and Carranza, S. 2004. Morphological and genetic evidence of the full specific status of *Iberolacerta cyreni martinezrici*. *Zootaxa*: 1-14.
- Carranza, S., Arnold, E.N. and Amat, F. 2004. DNA phylogeny of *Lacerta* (*Iberolacerta*) and other lacertine lizards (Reptilia: Lacertidae): did competition cause long-term mountain restriction? *Systematics and Biodiversity*: 57-77.
- Crochet, P.-A., Chaline, O., Surget-Groba, Y., Debain, C. and Cheylan, M. 2004. Speciation in mountains: phylogeography and phylogeny of the rock lizards genus *Iberolacerta* (Reptilia: Lacertidae). *Molecular Phylogenetics and Evolution*: 860-866.
- Harris, D.J., Arnold, E.N. and Thomas, R.H. 1998. Relationships of lacertid lizards (Reptilia: Lacertidae) estimated from mitochondrial DNA sequences and morphology. *Proceedings of the Royal Society London, Series B* 265: 1939-1948.
- IUCN. 2009. European Species on the IUCN Red List. Available at: <http://www.iucnredlist.org/europe>. (Accessed: 22 June 2009).
- Malkmus, R. 1982. Beitrag zur Verbreitung der Amphibien und Reptilien in Portugal. *Salamandra*: 218-299.
- Malkmus, R. 1985. Herpetologische Streifzüge durch die Serra da Estrela. *Herpetofauna*: 25-30.
- Malkmus, R. 2004. *Amphibians and reptiles of Portugal, Madeira and the Azores-archipelago*. A.R.G. Gantner Verlag K.G., Ruggell (Germany).
- Mayer, W. and Arribas, O.J. 1996. Allozyme differentiation and relationship among the Iberian-Pyrenean

Mountain Lizards (Squamata: Sauria: Lacertidae). *Herpetozoa*: 57-61.

Mayer, W. and Arribas, O.J. 2003. Phylogenetic relationships of the European lacertid genera *Archaeolacerta* and *Iberolacerta* and their relationships to some other 'Archaeolacertae' (sensu lato) from Near East, derived from mitochondrial DNA sequences. *Journal of zoological Systematics and evolutionary Research*: 157-161.

Pérez-Mellado, V., Barbadillo, L. J., Barahona, F., Brown, R.P., Corti, C., Guerrero, F. and Lanza, B. 1993. A systematic survey of the Iberian rock lizard *Lacerta monticola* Boulenger, 1905. In: Valakos, E. D., Böhme, W., Pérez-Mellado, V. and Maragou, P. (eds), *Lacertids of the Mediterranean region.*, pp. 85-105. Hellenic Zoological Society, Athens.

Pleguezuelos, J.M., Márquez, R. and Lizana, M. 2002. *Atlas y Libro Rojo de los Anfibios y Reptiles de España*. Dirección General de la Conservación de la naturaleza-Asociación Herpetológica Española., Madrid.

Regalado, P.G. 1991. Notas sobre la reproducción de *Lacerta monticola* (Sauria, Lacertidae) en las zonas costeras de Galicia (noroeste de España). *Revista Española de Herpetología*: 109-123.

Salvador, A. 1984. *Lacerta monticola* - Iberische Gebirgseidechse. In: Böhme, W. (ed.), *Handbuch der Reptilien und Amphibien Europas, Band 2/I., Echsen II (Lacerta).*, pp. 276-289. Aula-Verlag., Wiesbaden.

Sindaco, R. and Jeremčenko, V.K. 2008. *The Reptiles of the Western Palearctic. 1. Annotated Checklist and Distributional atlas of the turtles, crocodiles, amphisbaenians and lizards of Europe, North Africa, Middle East and Central Asia*. Edizioni Belvedere, Latina (Italy).

Citation

Valentin Pérez-Mellado, Paulo Sá-Sousa, Rafael Marquez, Iñigo Martínez-Solano. 2009. *Iberolacerta monticola*. *The IUCN Red List of Threatened Species 2009*: e.T61448A12487278.
<http://dx.doi.org/10.2305/IUCN.UK.2009.RLTS.T61448A12487278.en>

Disclaimer

To make use of this information, please check the [Terms of Use](#).

External Resources

For [Images and External Links to Additional Information](#), please see the Red List website.

Appendix

Habitats

(<http://www.iucnredlist.org/technical-documents/classification-schemes>)

Habitat	Season	Suitability	Major Importance?
1. Forest -> 1.5. Forest - Subtropical/Tropical Dry	-	Suitable	-
3. Shrubland -> 3.4. Shrubland - Temperate	-	Suitable	-
5. Wetlands (inland) -> 5.1. Wetlands (inland) - Permanent Rivers/Streams/Creeks (includes waterfalls)	-	Marginal	-
0. Root -> 6. Rocky areas (eg. inland cliffs, mountain peaks)	-	Suitable	-

Threats

(<http://www.iucnredlist.org/technical-documents/classification-schemes>)

Threat	Timing	Scope	Severity	Impact Score
1. Residential & commercial development -> 1.3. Tourism & recreation areas	Ongoing	-	-	-
	Stresses:	1. Ecosystem stresses -> 1.1. Ecosystem conversion 1. Ecosystem stresses -> 1.2. Ecosystem degradation		
2. Agriculture & aquaculture -> 2.1. Annual & perennial non-timber crops -> 2.1.3. Agro-industry farming	Ongoing	-	-	-
	Stresses:	1. Ecosystem stresses -> 1.1. Ecosystem conversion 1. Ecosystem stresses -> 1.2. Ecosystem degradation		
7. Natural system modifications -> 7.1. Fire & fire suppression -> 7.1.3. Trend Unknown/Unrecorded	Ongoing	-	-	-
	Stresses:	1. Ecosystem stresses -> 1.2. Ecosystem degradation		

Conservation Actions in Place

(<http://www.iucnredlist.org/technical-documents/classification-schemes>)

Conservation Actions in Place
In-Place Land/Water Protection and Management
Conservation sites identified: Yes, over entire range

Conservation Actions Needed

(<http://www.iucnredlist.org/technical-documents/classification-schemes>)

Conservation Actions Needed
1. Land/water protection -> 1.1. Site/area protection
2. Land/water management -> 2.1. Site/area management

Research Needed

(<http://www.iucnredlist.org/technical-documents/classification-schemes>)

Research Needed
0. Root -> 100.1. OLD 1.1.1-Policy-base actions->Management plans->Development
1. Research -> 1.1. Taxonomy
1. Research -> 1.2. Population size, distribution & trends
1. Research -> 1.3. Life history & ecology
1. Research -> 1.5. Threats
1. Research -> 1.6. Actions
3. Monitoring -> 3.1. Population trends

Additional Data Fields

Distribution
Lower elevation limit (m): 0
Upper elevation limit (m): 2000
Population
Population severely fragmented: No

The IUCN Red List Partnership



The IUCN Red List of Threatened Species™ is produced and managed by the [IUCN Global Species Programme](#), the [IUCN Species Survival Commission \(SSC\)](#) and [The IUCN Red List Partnership](#). The IUCN Red List Partners are: [BirdLife International](#); [Botanic Gardens Conservation International](#); [Conservation International](#); [Microsoft](#); [NatureServe](#); [Royal Botanic Gardens, Kew](#); [Sapienza University of Rome](#); [Texas A&M University](#); [Wildscreen](#); and [Zoological Society of London](#).